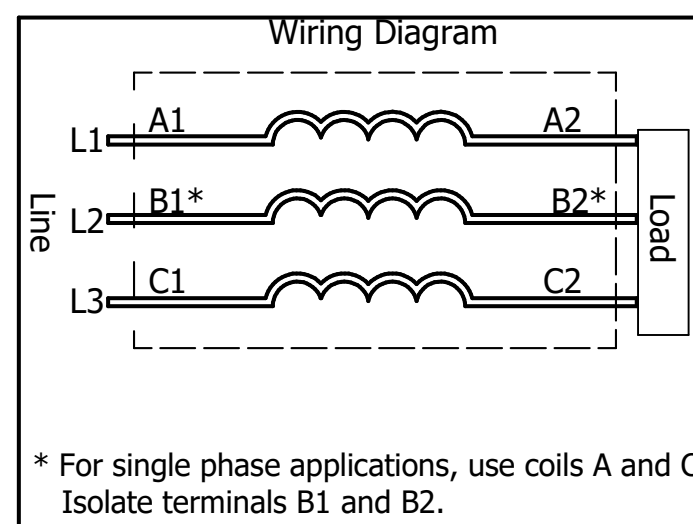
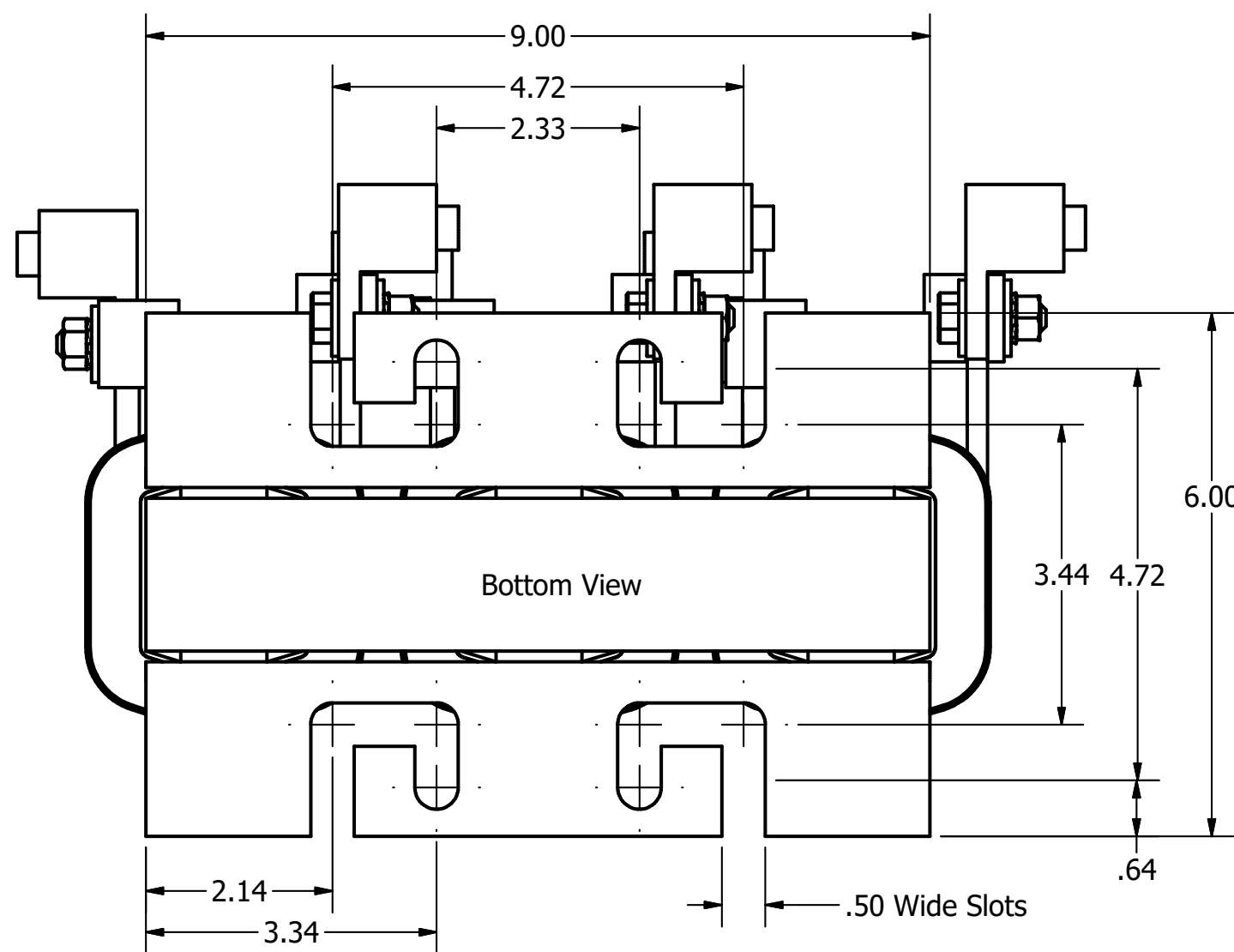
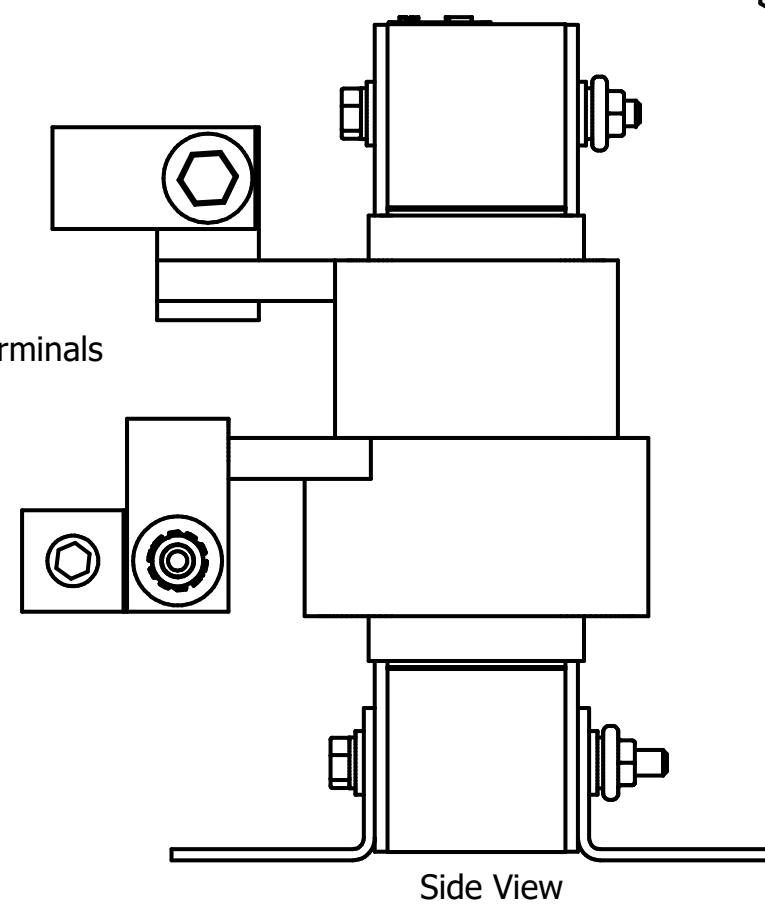
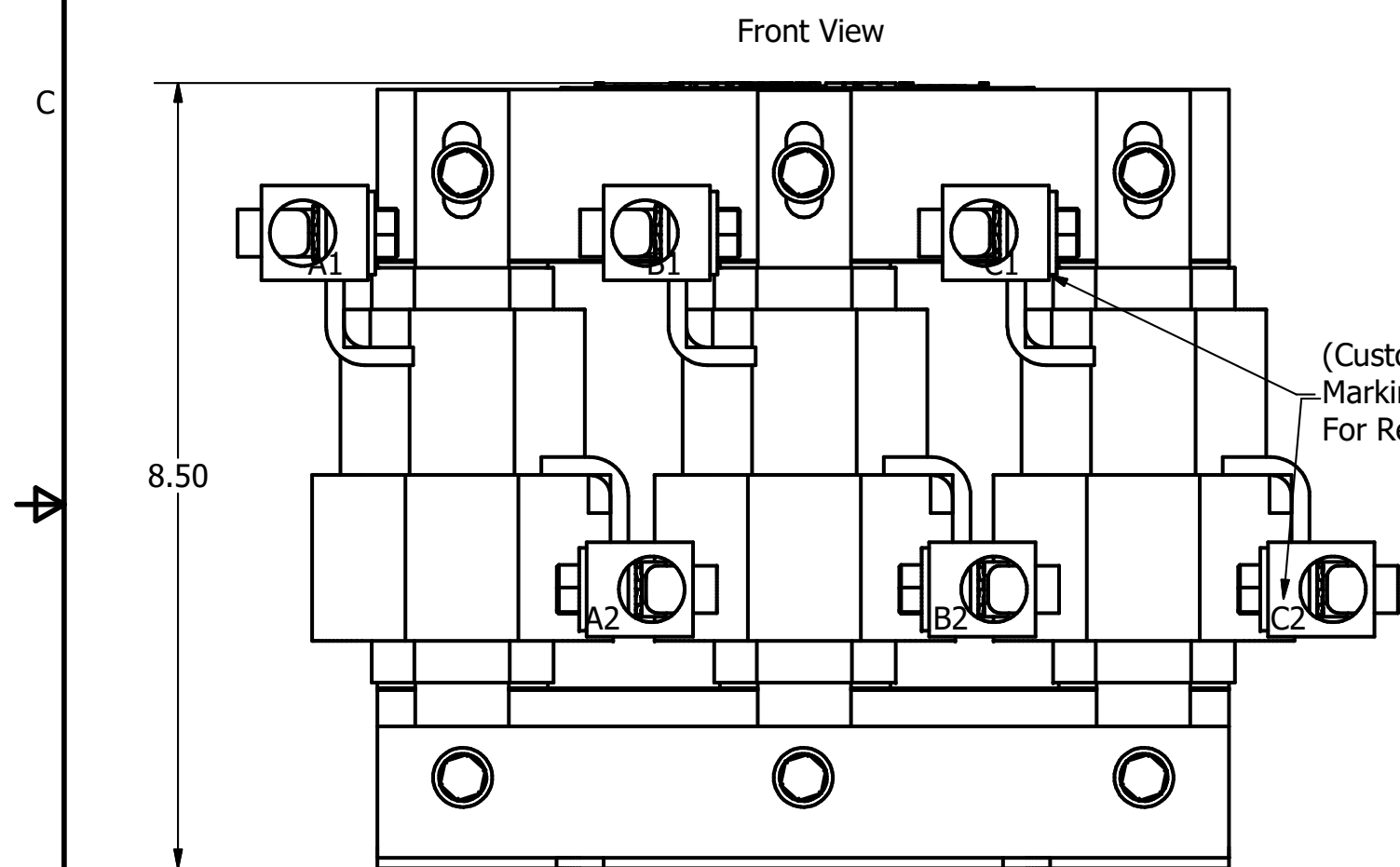


575 Rated Voltage, 600 Max Voltage, Low Z, Impedance.							
Part Number	Horsepower (HP)	Motor Amps (A)	Maximum Amps (A)	Inductance (uH)	Weight (LBS)	Losses (W)	Attached Lug Kit
KDRULI42L	200	192	192	146	52	342	SLK11



TCI (800) 824-8282 transcoll.com

TCL, LLC
 Germantown, WI, USA
transcoll.com
 800-824-8282

UL LISTED **CE**
2ND CONT. EQ. INFO

KDRUL Drive Reactor
 KDRUL— Motor Amps —
 3PH, 50/60Hz, —V Rated, 600V Max, —A Max
 40C Amb Max, 155C Rise, RoHS
 Term Torque— lb-in

DATE CODE

- Note:
1. UL file number: cULus Listed File E116124.
 2. KDR Drive Reactors Comply With The Thermal and Altitude Standards Set Forth by NEMA ST20-1992.
 3. For Terminal Torques And Wire Size See, KDR IOM Manual, Part Number 30895
 4. NEC Current For 208/240 Volts, Horsepower Based On 208 Volts.
 5. Material(s) Shall be RoHS Compliant
 6. Customer Is Responsible For Installation To Meet All National And Local Electrical Codes.

TCL, LLC CLAIMS PROPRIETARY RIGHTS IN THE MATERIAL HEREIN DISCLOSED. IT IS SUPPLIED WITHOUT PREJUDICE TO ANY PATENT RIGHTS OF TCL AND MAY NOT BE REPRODUCED OR USED TO MANUFACTURE ANYTHING SHOWN THEREIN WITHOUT WRITTEN PERMISSION FROM TCL.

NO.	REVISION	DATE	BY

TCL W132 N10611 Grant Drive
 Germantown, WI 53022

KDRUL I Frame, Copper Bus
 Reactor Drawing

DRN BY: DSW DATE: 2/28/18 107535DG
 SCALE: 1/2 APRVD: SIZE C SHT.6 OF 6